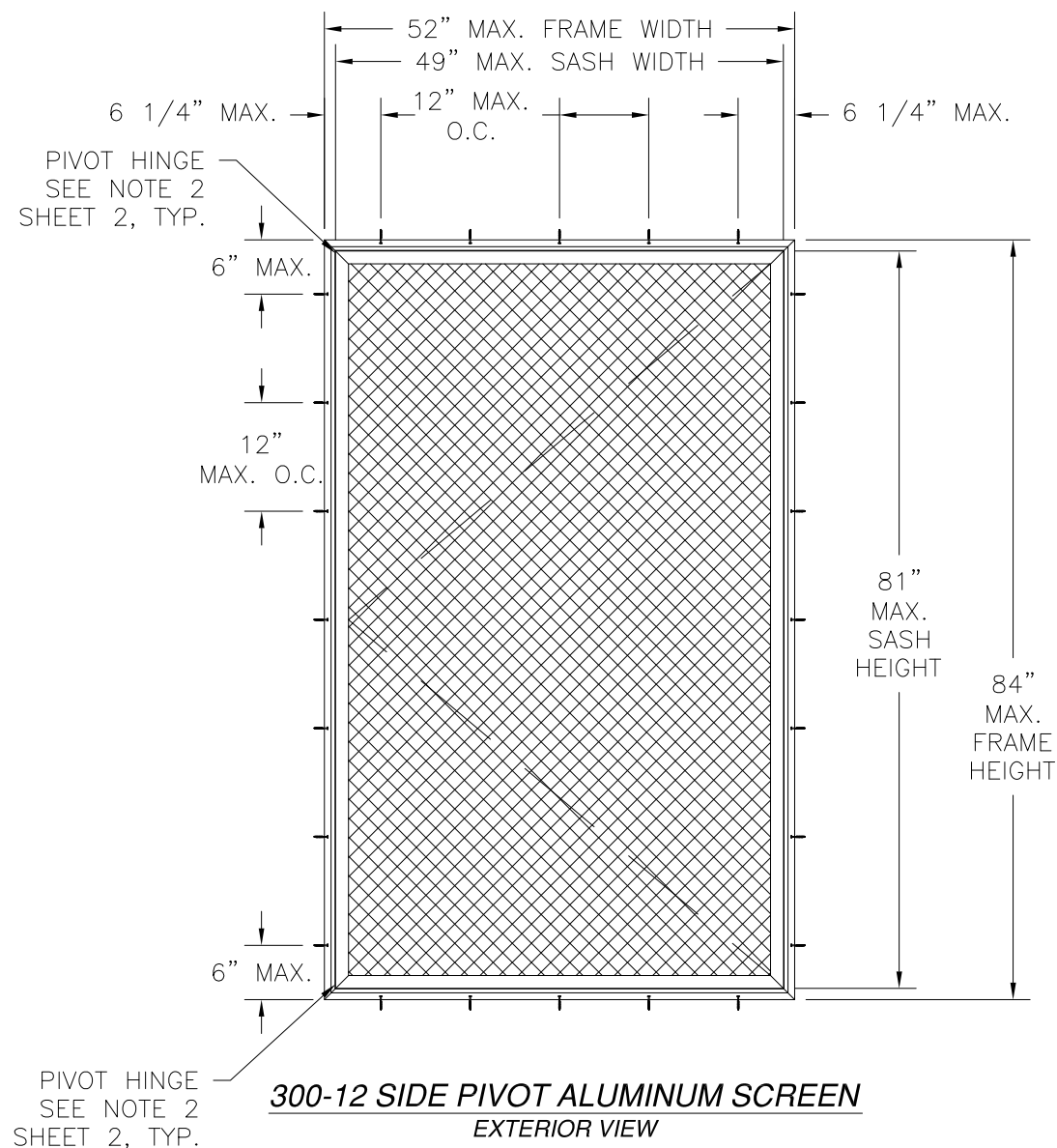


REVISIONS			
REV	DESCRIPTION	DATE	APPROVED



DESIGN PRESSURE RATING	IMPACT RATING
<b>±50PSF</b>	<b>LARGE AND SMALL MISSILE IMPACT</b>

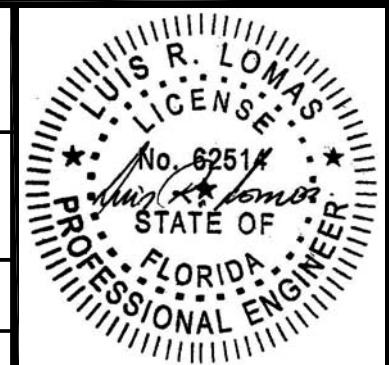
**NOTES:**

- 1) THE PRODUCT SHOWN HEREIN IS DESIGNED AND MANUFACTURED TO COMPLY WITH REQUIREMENTS OF THE FLORIDA BUILDING CODE INCLUDING THE HVHZ.
- 2) WOOD FRAMING AND MASONRY OPENING TO BE DESIGNED AND ANCHORED TO PROPERLY TRANSFER ALL LOADS TO STRUCTURE. FRAMING AND MASONRY OPENING IS THE RESPONSIBILITY OF THE ARCHITECT OR ENGINEER OF RECORD.
- 3) 1X BUCK OVER MASONRY/CONCRETE IS OPTIONAL. WHERE 1X BUCK IS NOT USED DISSIMILAR MATERIALS MUST BE SEPARATED WITH APPROVED COATING OR MEMBRANE. SELECTION OF COATING OR MEMBRANE IS THE RESPONSIBILITY OF THE ARCHITECT OR ENGINEER OF RECORD.
- 4) ALLOWABLE STRESS INCREASE OF 1/3 WAS NOT USED IN THE DESIGN OF THE PRODUCT SHOWN HEREIN. WIND LOAD DURATION FACTOR Cd=1.6 WAS USED FOR WOOD ANCHOR CALCULATIONS.
- 5) FRAME MATERIAL: EXTRUDED ALUMINUM 6063-T5 .080" THICK.  
SASH MATERIAL: EXTRUDED ALUMINUM 6063-T5 .088" THICK.
- 6) SCREEN MATERIAL: .035" STAINLESS STEEL WITH 12 x12 STRANDS PER SQUARE INCH AND .048" OPEN SPACE BETWEEN STRANDS. MESH FINISH MAY BE NATURAL OR PAINTED.
- 7) APPROVED IMPACT PROTECTIVE SYSTEM IS NOT REQUIRED FOR THIS PRODUCT IN WIND BORNE DEBRIS REGIONS.

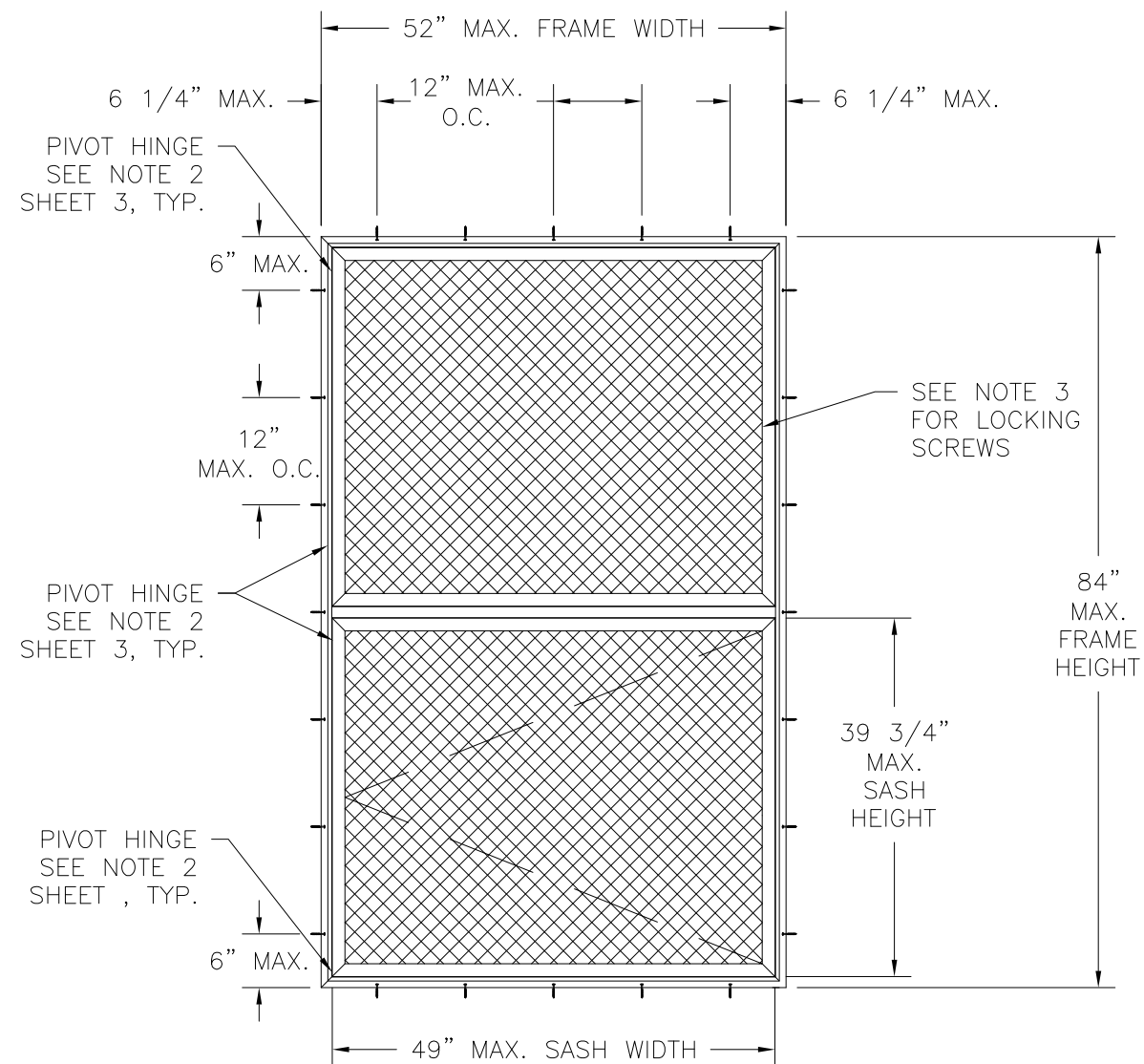
SIGNED: 09/04/2014

TABLE OF CONTENTS	
SHEET NO.	DESCRIPTION
1 - 2	ELEVATIONS, ANCHORING AND NOTES
3 - 6	INSTALLATION DETAILS
7	COMPONENTS

<b>TAPCO INCORPORATED</b> 1815 McCULLOUGH BLVD. TUPELO, MS 38801		
300 SERIES SIDE PIVOT ALUMINUM HURRICANE SCREEN - IMPACT RESISTANT SINGLE ELEVATION, ANCHORING AND NOTES		
DRAWN: J.L.	DWG NO. 08-02478	REV -
SCALE NTS	DATE 09/02/14	SHEET 1 OF 7



REVISIONS			
REV	DESCRIPTION	DATE	APPROVED



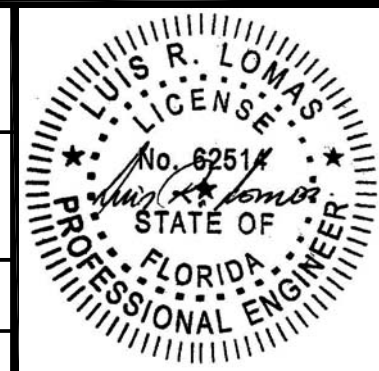
NOTE:

- 1) SINGLE WITH TRANSOM SHOWN WITH ACTIVE SASH ON BOTTOM AND FIXED SASH ON TOP. HORIZONTAL MULLED UNITS CAN BE MULLED IN ANY COMBINATION OF ACTIVE AND FIXED SASHES AS LONG AS INDIVIDUAL SASH DOES NOT EXCEED OVERALL SASH SIZE AS SHOWN HEREIN AND HORIZONTAL MULLION DOES NOT EXCEED 51 1/4".
- 2) PIVOT HINGES ARE LOCATED AT TOP AND BOTTOM OF EACH SASH. PIVOT HINGES ARE  $\phi 1/4" \times 2 1/2"$
- 3) INSTALL LOCKING SCREWS #10x1 1/2" AT FIXED SASH AS FOLLOWS: 6" FROM EACH SASH END AND ONE MORE AT CENTER OF SASH.

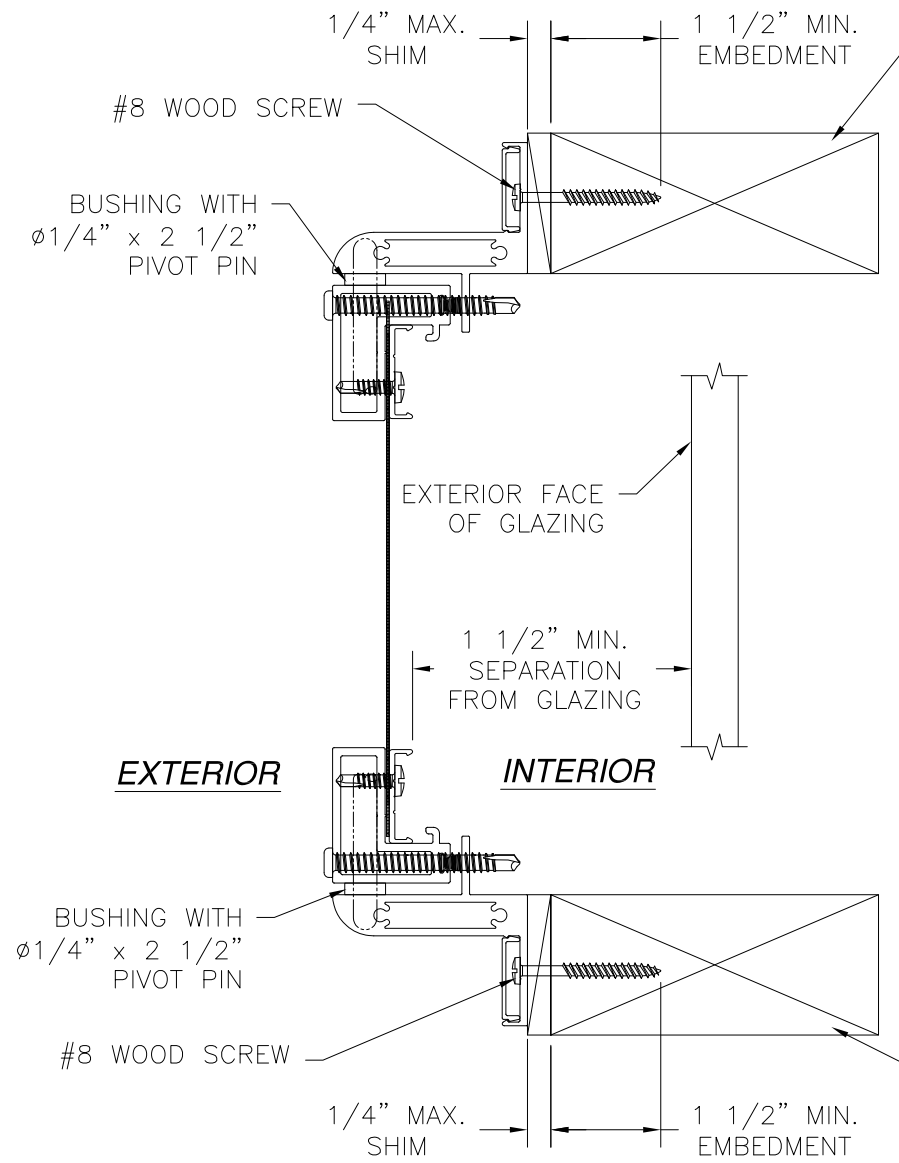
**300-13 SIDE PIVOT MULLED ALUMINUM SCREEN**  
EXTERIOR VIEW

DESIGN PRESSURE RATING	IMPACT RATING
$\pm 50$ PSF	LARGE AND SMALL MISSILE IMPACT

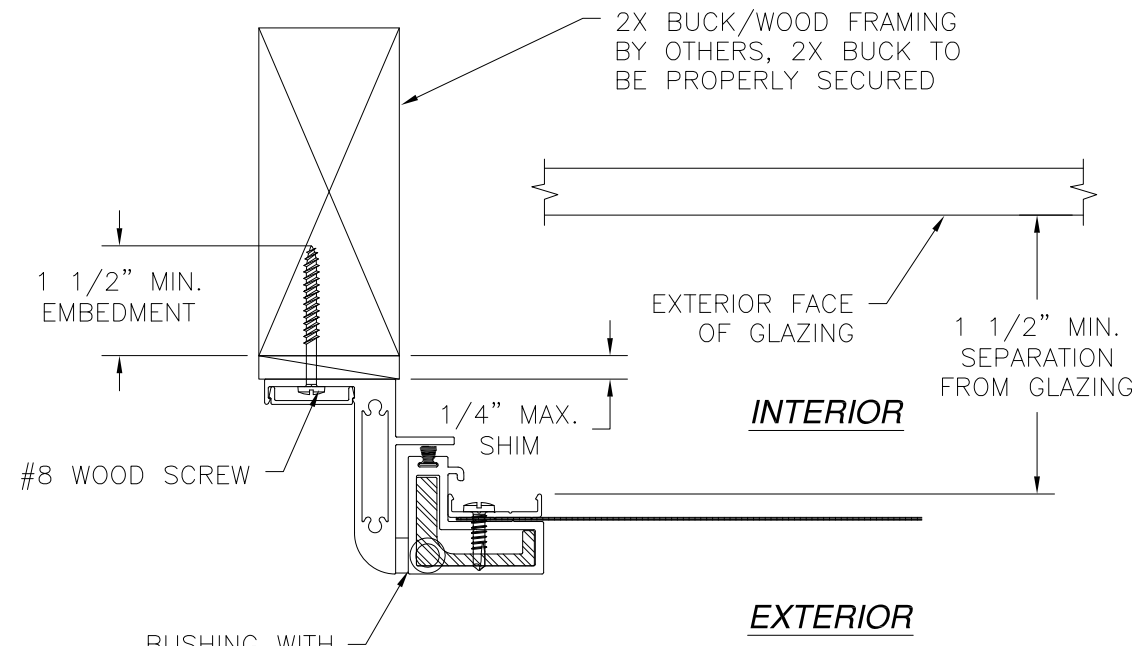
<b>TAPCO INCORPORATED</b> 1815 McCULLOUGH BLVD. TUPELO, MS 38801		
300 SERIES SIDE PIVOT ALUMINUM HURRICANE SCREEN – IMPACT RESISTANT SINGLE ELEVATION, ANCHORING AND NOTES		
DRAWN: J.L.	DWG NO. 08-02478	REV —
SCALE NTS	DATE 09/02/14	SHEET 2 OF 7



REVISIONS			
REV	DESCRIPTION	DATE	APPROVED



**VERTICAL CROSS SECTION**  
 2X BUCK/WOOD FRAMING INSTALLATION  
 SINGLE SCREEN SHOWN, MULLED  
 SCREEN SIMILAR



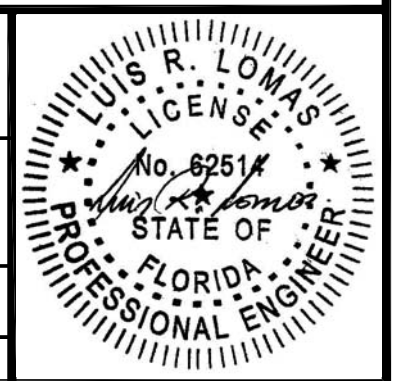
**HORIZONTAL CROSS SECTION**  
 2X BUCK/WOOD FRAMING INSTALLATION  
 ACTIVE SASH SHOWN, FIXED  
 SASH SIMILAR

- ANCHORING NOTES:
- 1) SHIM AS REQUIRED AT EACH INSTALLATION ANCHOR WITH LOAD BEARING SHIM. SHIM WHERE SPACE OF 1/16" OR GREATER OCCURS. MAXIMUM ALLOWABLE SHIM STACK TO BE 1/4".
  - 2) FOR ANCHORING INTO MASONRY USE 3/16" ELCO ULTRACON TAPCONS WITH SUFFICIENT LENGTH TO ACHIEVE A 1 1/4" MINIMUM EMBEDMENT INTO SUBSTRATE WITH 1 3/4" MINIMUM EDGE DISTANCE. LOCATE ANCHORS AS SHOWN IN ELEVATIONS AND INSTALLATION DETAILS.
  - 3) FOR ANCHORING INTO WOOD FRAMING OR 2X BUCK USE #8 WOOD SCREW WITH SUFFICIENT LENGTH TO ACHIEVE A 1 3/16" MINIMUM EMBEDMENT INTO SUBSTRATE. LOCATE ANCHORS AS SHOWN IN ELEVATIONS AND INSTALLATION DETAILS.
  - 4) FOR ANCHORING INTO 16GA. MINIMUM STEEL STUD FRAMING USE #8 TEK SCREW WITH SUFFICIENT LENGTH TO ACHIEVE 3-THREAD PITCH MINIMUM BEYOND SUBSTRATE. LOCATE ANCHORS AS SHOWN IN ELEVATIONS AND INSTALLATION DETAILS.
  - 5) FOR ANCHORING INTO 1" x 1 1/4" x 1/8" THICK WALL MINIMUM ALUMINUM 6063-T6 TUBE FRAMING USE #10 TEK SCREW WITH SUFFICIENT LENGTH TO ACHIEVE 3-THREAD PITCH MINIMUM BEYOND SUBSTRATE. LOCATE ANCHORS AS SHOWN IN ELEVATIONS AND INSTALLATION DETAILS.
  - 6) ALL FASTENERS TO BE CORROSION RESISTANT.
  - 7) INSTALLATION ANCHORS SHALL BE INSTALLED IN ACCORDANCE WITH ANCHOR MANUFACTURER'S INSTALLATION INSTRUCTIONS, AND ANCHORS SHALL NOT BE USED IN SUBSTRATES WITH STRENGTHS LESS THAN THE MINIMUM STRENGTH SPECIFIED BELOW:
    - A. WOOD - MINIMUM SPECIFIC GRAVITY OF G=0.42
    - B. CONCRETE - MINIMUM COMPRESSIVE STRENGTH OF 3,200 PSI.
    - C. MASONRY - STRENGTH CONFORMANCE TO ASTM C-90, GRADE N, TYPE 1 (OR GREATER).
    - D. STEEL STUD FRAMING - 16GA. MINIMUM.
    - E. ALUMINUM TUBE FRAMING - 6063-T6 1" x 1 1/4" x 1/8" MINIMUM WALL.

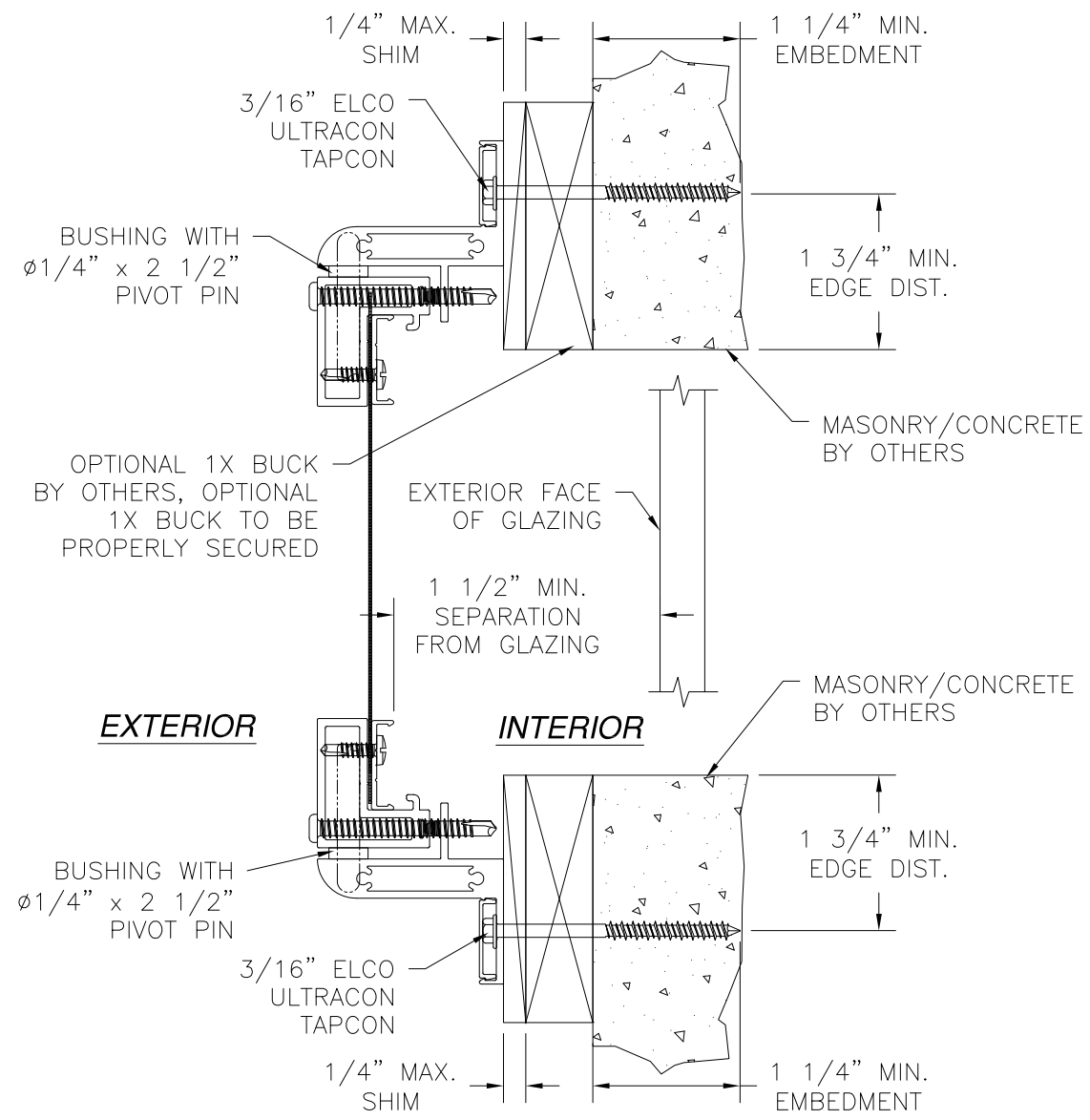
**TAPCO INCORPORATED**  
 1815 McCULLOUGH BLVD.  
 TUPELO, MS 38801

300 SERIES SIDE PIVOT ALUMINUM  
 HURRICANE SCREEN - IMPACT RESISTANT  
 INSTALLATION DETAILS

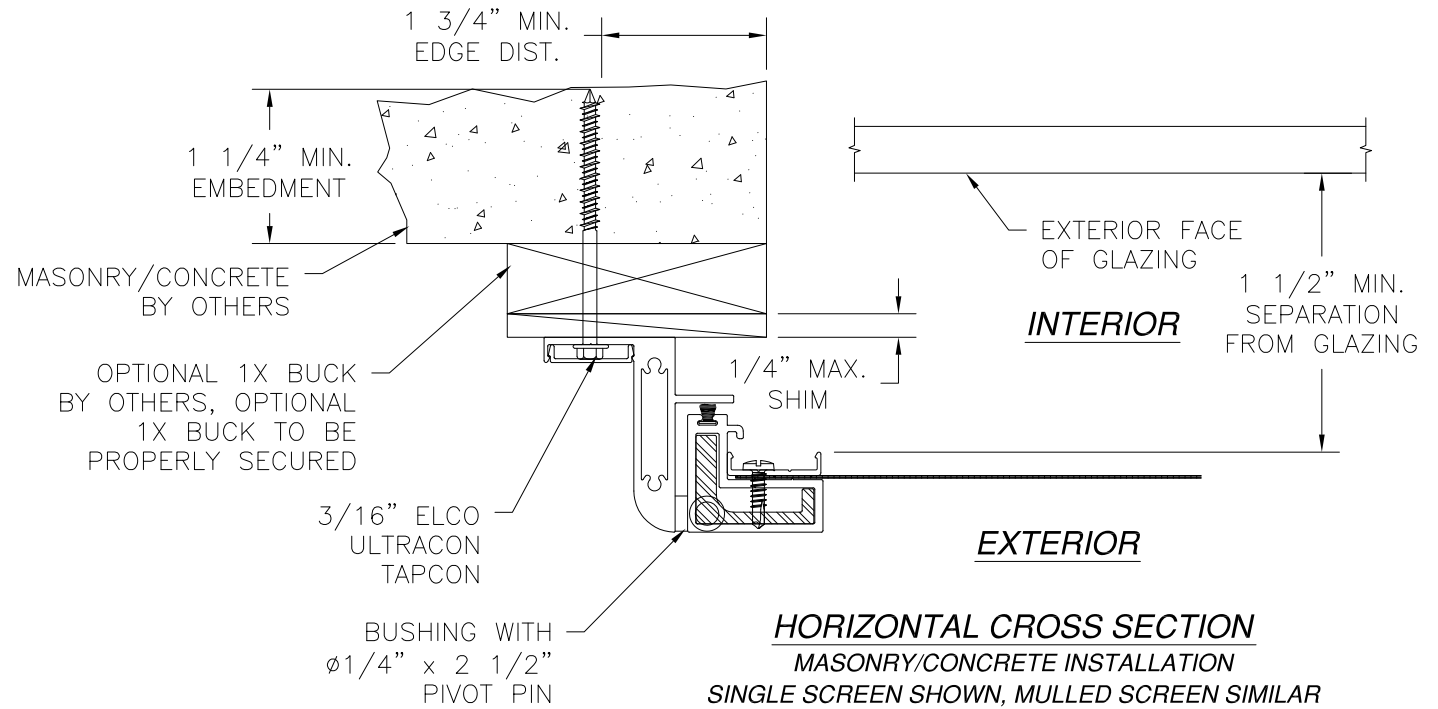
DRAWN: J.L.	DWG NO. 08-02478	REV -
SCALE NTS	DATE 09/02/14	SHEET 3 OF 7



REVISIONS			
REV	DESCRIPTION	DATE	APPROVED



**VERTICAL CROSS SECTION**  
MASONRY/CONCRETE INSTALLATION  
SINGLE SCREEN SHOWN, MULLED  
SCREEN SIMILAR

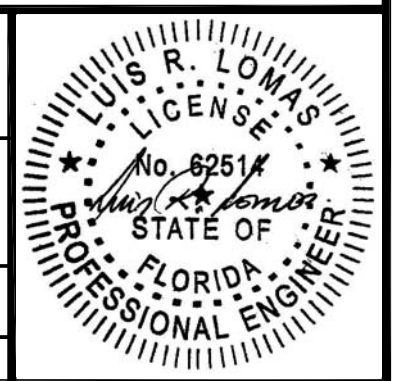


**HORIZONTAL CROSS SECTION**  
MASONRY/CONCRETE INSTALLATION  
SINGLE SCREEN SHOWN, MULLED SCREEN SIMILAR

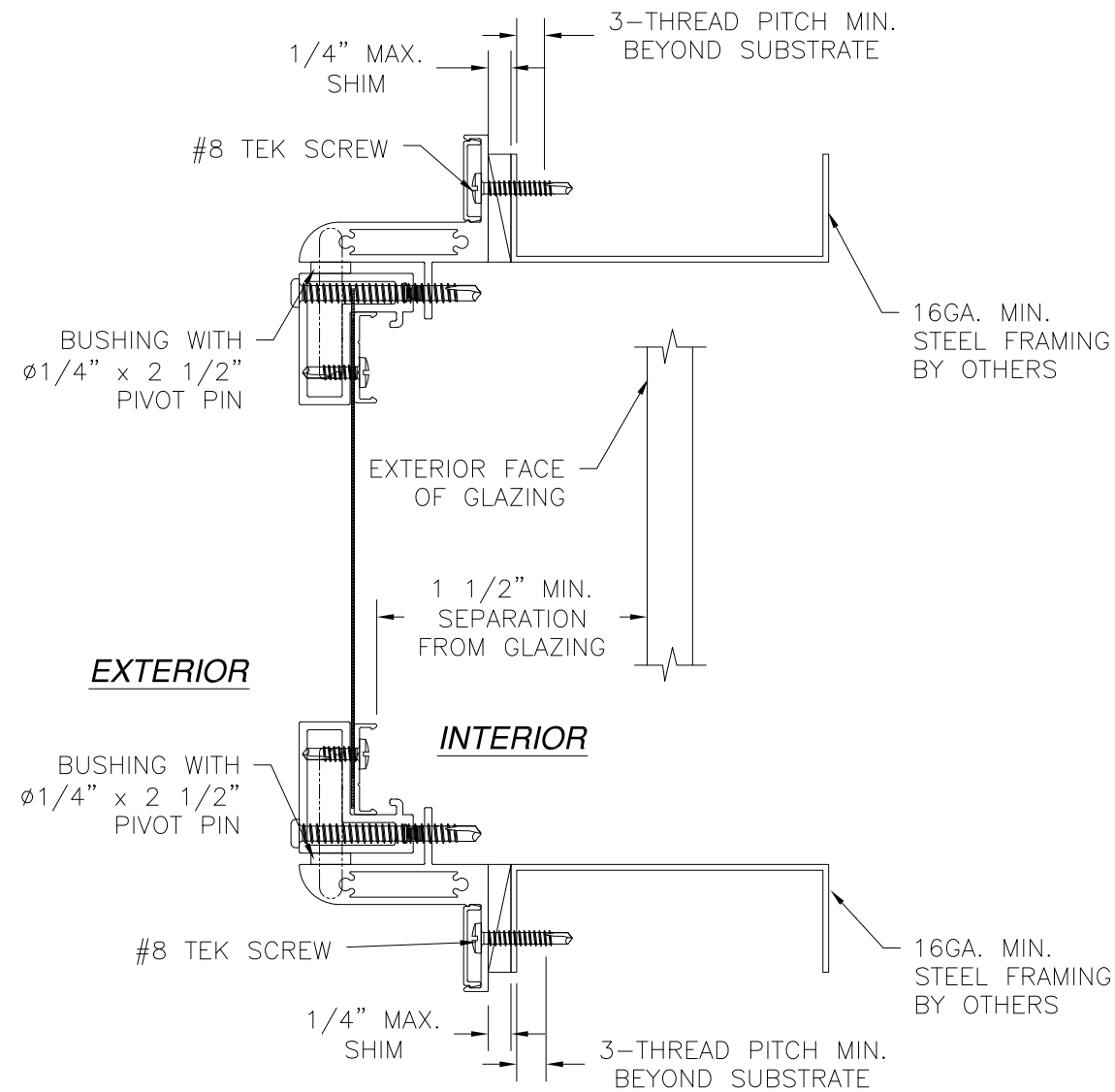
**TAPCO INCORPORATED**  
1815 McCULLOUGH BLVD.  
TUPELO, MS 38801

300 SERIES SIDE PIVOT ALUMINUM  
HURRICANE SCREEN – IMPACT RESISTANT  
INSTALLATION DETAILS

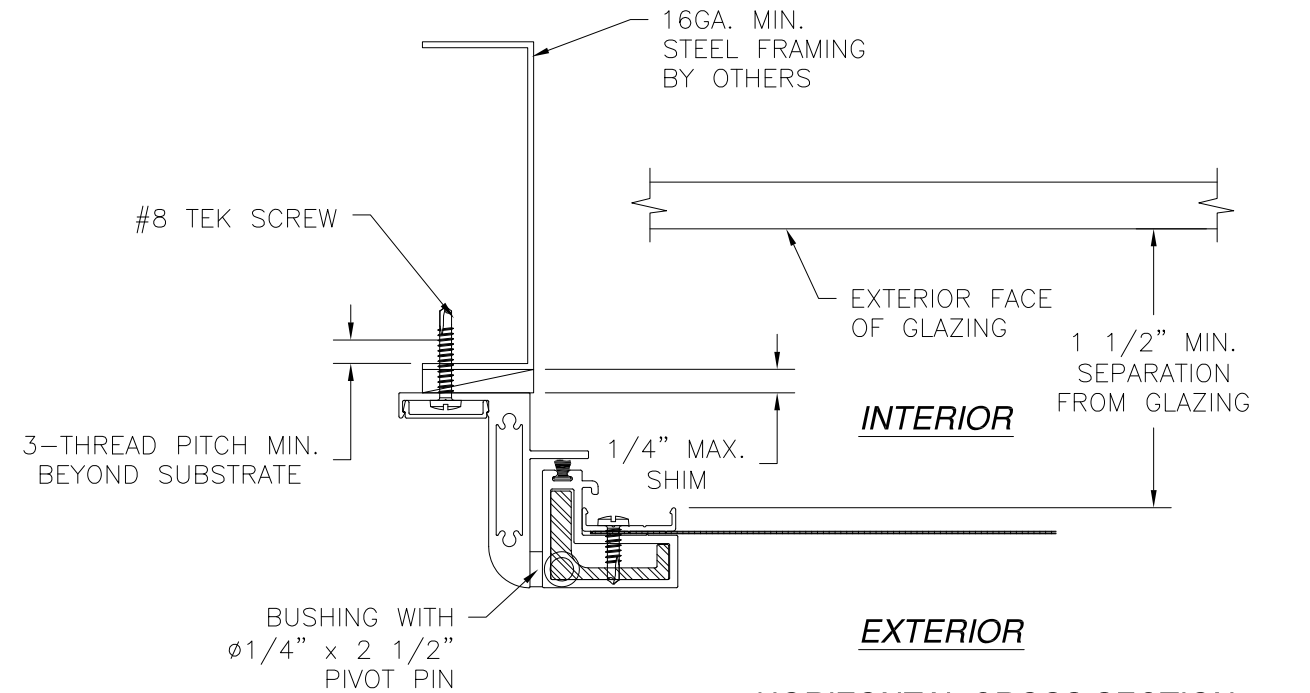
DRAWN: J.L.	DWG NO. 08-02478	REV -
SCALE NTS	DATE 09/02/14	SHEET 4 OF 7



REVISIONS			
REV	DESCRIPTION	DATE	APPROVED



**VERTICAL CROSS SECTION**  
 STEEL FRAMING INSTALLATION  
 SINGLE SCREEN SHOWN, MULLED  
 SCREEN SIMILAR



**HORIZONTAL CROSS SECTION**  
 STEEL FRAMING INSTALLATION  
 SINGLE SCREEN SHOWN, MULLED SCREEN SIMILAR

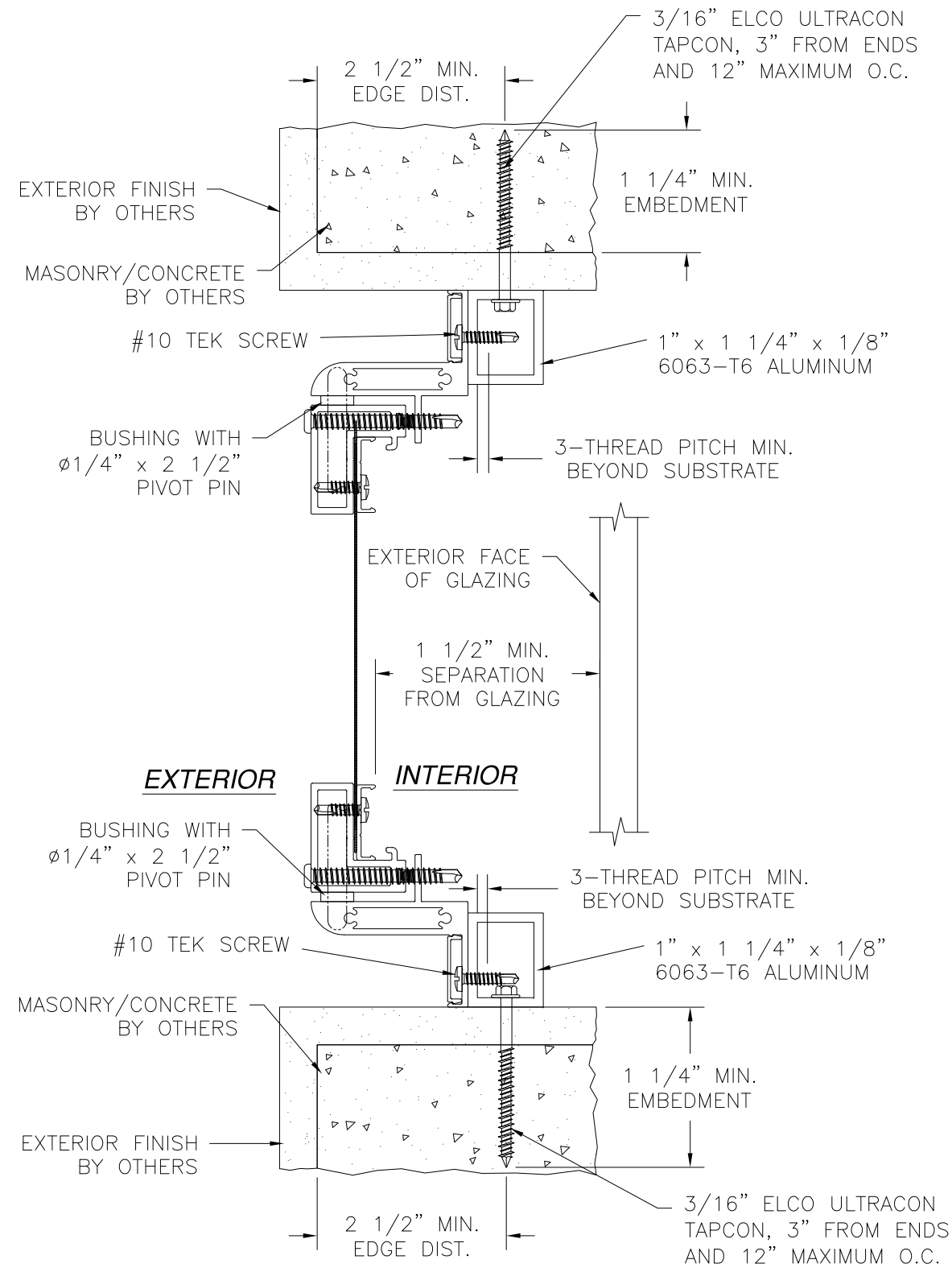
TAPCO INCORPORATED  
 1815 McCULLOUGH BLVD.  
 TUPELO, MS 38801

300 SERIES SIDE PIVOT ALUMINUM  
 HURRICANE SCREEN – IMPACT RESISTANT  
 INSTALLATION DETAILS

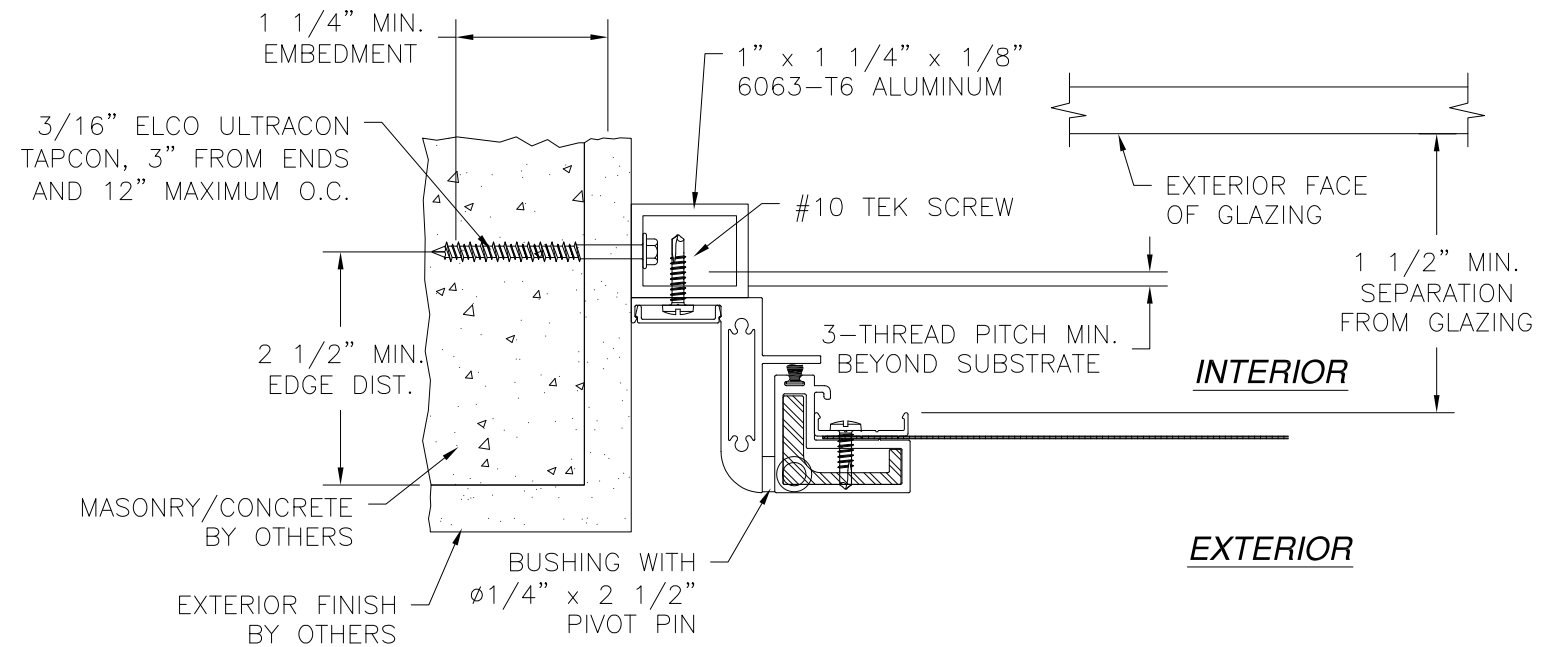
DRAWN: J.L.	DWG NO. 08-02478	REV -
SCALE NTS	DATE 09/02/14	SHEET 5 OF 7



REVISIONS			
REV	DESCRIPTION	DATE	APPROVED



**VERTICAL CROSS SECTION**  
ALUMINUM TUBE FRAMING INSTALLATION  
SINGLE SCREEN SHOWN, MULLED SCREEN SIMILAR

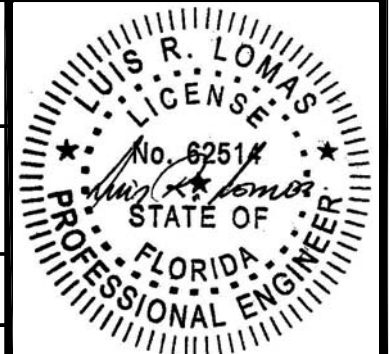


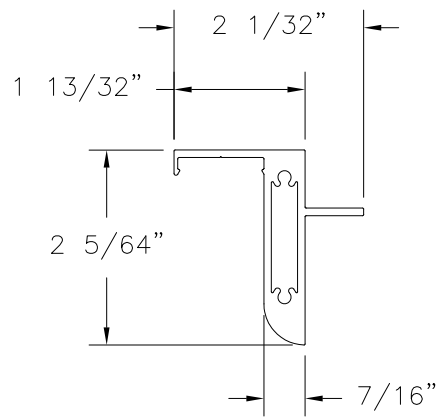
**HORIZONTAL CROSS SECTION**  
ALUMINUM TUBE FRAMING INSTALLATION  
SINGLE SCREEN SHOWN, MULLED SCREEN SIMILAR

**TAPCO INCORPORATED**  
1815 McCULLOUGH BLVD.  
TUPELO, MS 38801

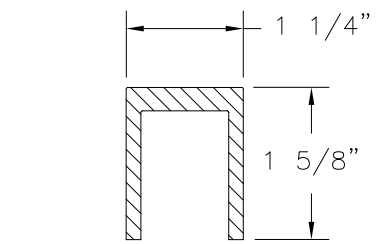
300 SERIES SIDE PIVOT ALUMINUM  
HURRICANE SCREEN - IMPACT RESISTANT  
INSTALLATION DETAILS

DRAWN: J.L.	DWG NO. 08-02478	REV -
SCALE NTS	DATE 09/02/14	SHEET 6 OF 7

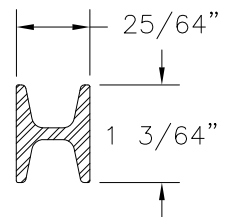




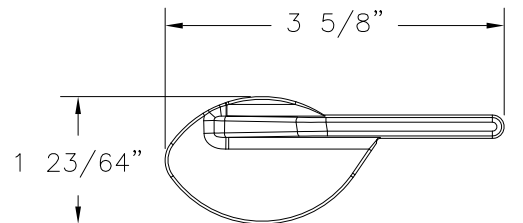
**300 SUB FRAME**  
ALUMINUM 6063-T5 .080" THICK



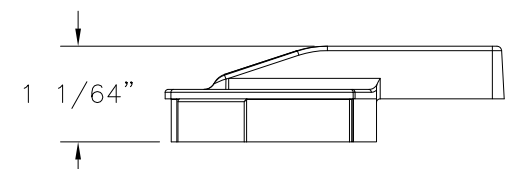
**U-CHANNEL**  
ALUMINUM 6005-T6 .156" THICK



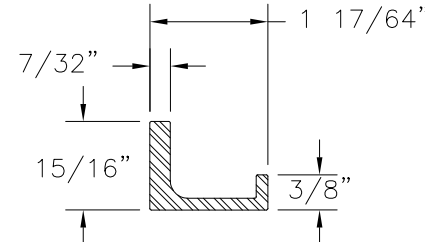
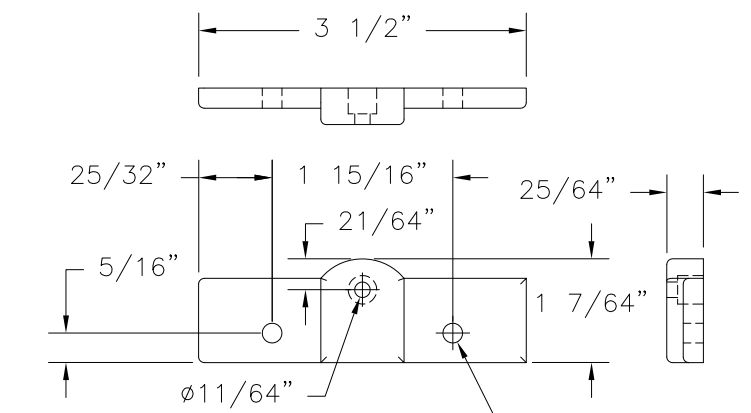
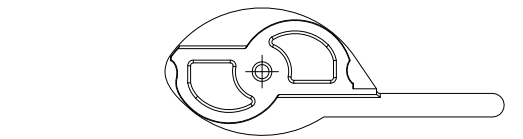
**SUPPORT I-BEAM**  
ALUMINUM 6005-T6 .125" THICK



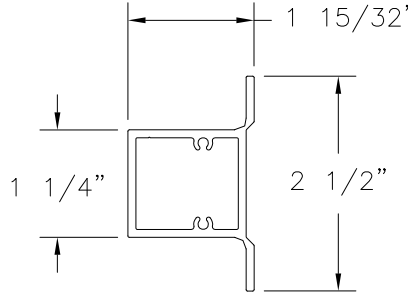
**TAPCO LEVER**  
ALUMINUM 6063-T5



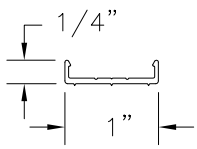
**TAPCO LEVER BASE**  
ALUMINUM 6063-T5



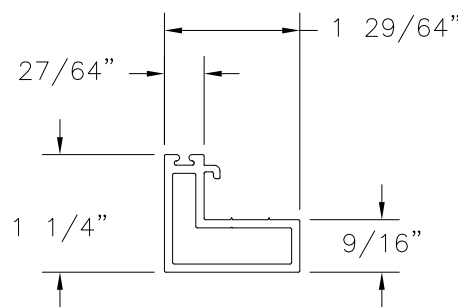
**HS FILLER**  
ALUMINUM 6005-T6 .125" THICK



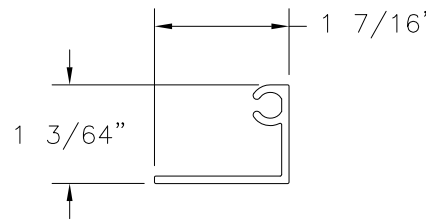
**HORIZONTAL MULL BAR**  
ALUMINUM 6063-T5 .092" THICK



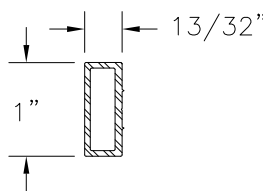
**FLAT BAR U-CHANNEL**  
ALUMINUM 6063-T5 .060" THICK



**MAIN FRAME**  
ALUMINUM 6063-T5 .088" THICK



**LATCH .720 HOUSING**  
ALUMINUM 6063-T5 .062" THICK



**MULLION**  
ALUMINUM 6063-T5 .075" THICK

REVISIONS			
REV	DESCRIPTION	DATE	APPROVED

**TAPCO INCORPORATED**  
1815 McCULLOUGH BLVD.  
TUPELO, MS 38801

300 SERIES SIDE PIVOT ALUMINUM  
HURRICANE SCREEN – IMPACT RESISTANT  
COMPONENTS

DRAWN: J.L.	DWG NO. 08-02478	REV -
SCALE NTS	DATE 09/02/14	SHEET 7 OF 7

